

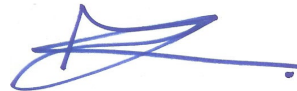
VenhoevenCS

architecture+urbanism

Scope 3 Analysis

Company information

Company name	VenhoevenCS architecture+urbanism
Date	08/04/2023
Validated	QHSE manager - Helga Lasschuijt



Quantitative Scope 3 analysis VenhoevenCS

Based on 2023 figures

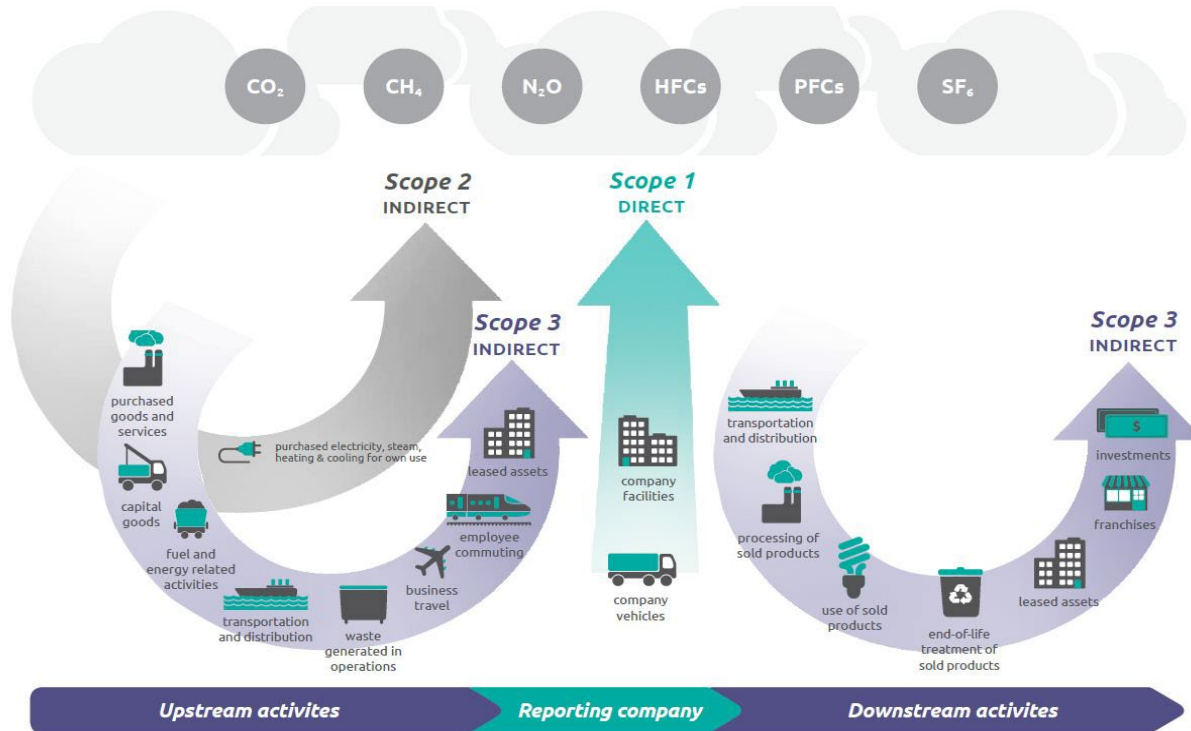
The green house gas emissions generated in the chain of VenhoevenCS are identified and analyzed. The scope 3 emissions are mainly caused by procurement, which is reflected in the top 3 emissions.

Top 3 - Scope 3 emissions			
1. Category: Procurement	Goods and services		106 ton CO2
2. Category: Waste	Waste		2 ton CO2
3. Category: Travel (train)	Commuter travel		0 ton CO2

	Activity within category	Part of the chain?	Part of scope 1/2	Project related	Ton CO2	Influence?	Ranking	% of total	Possibilities to reduce CO2 emissions in the chain	
Upstream Scope 3 Emissions										
1.	Goods and services	Procurement	Yes	No	Yes	105,94	Moderate	1	97,89%	This will always increase with turnover. However, an annual assessment is made to determine whether more sustainable choices can be made. This is also part of our procurement policy.
2.	Material goods		No							
3.	Fuel and energy related activities (not in scope 1 or 2)		No							
4.	Upstream transport and distribution		No							
5.	Waste	Waste	Yes	No	No	2,28	Moderate	2	2,11%	Maintaining the current policy
6.	Business travel (not in scope 1 or 2)		No							
7.	Commuter travel	Travel (train)	Yes	No	No	0,00	Yes		0,00%	Maintaining the current policy
8.	Upstream leased assets		No							
Downstream Scope 3 Emissions										
9.	Downstream transport and distribution		No							
10.	Processing or handling of sold products		No							
11.	Use of sold products		No							
12.	End-of-life cycle of sold products		Yes	No	Yes		Yes			Part of the chain analysis
13.	Downstream leased assets		No							
14.	Franchise		NA							
15.	Investments		NA							
Total					108,23					

Overview scope 3 emissions

"Are travel expenses claimed?" If the answer is yes, then the emissions belong to scope 2. If the answer is no, then the emissions belong to scope 3.



Quantitative Scope 3 analysis VenhoevenCS

Breakdown of Goods & Services

Emission flow	Som van CO2 kg	Som van CO2 kg2
Administratie	31.496	29,73%
Architecten en ingenieurs	18.702	17,65%
Computer services	15.101	14,25%
Overige professionele, wetenschappelijke en technische diensten	12.007	11,33%
Reclame en marktonderzoek	7.578	7,15%
Gebouwen en bouwwerkzaamheden	6.452	6,09%
Verzekeringen	6.000	5,66%
Facilitaire diensten	4.440	4,19%
Accounting, boekhouding en belastingadvies	1.982	1,87%
Diensten van ledenorganisaties	1.424	1,34%
Onroerend goed diensten	761	0,72%
Eindtotaal	105.943	100,00%